

'CO₂ Zero Travel' is the English name for 'CO₂ ゼロ旅行', and 'CO₂ ゼロ旅行' is a registered trademark of JTB Corp in Japan.

Turn travel CO₂ emissions to zero!

JTB: Pioneering Travel towards Sustainability
Protecting the Earth while Traveling

CO₂ Zero Travel

Leaving behind a more beautiful Earth for the future...
Here at JTB, this is our fervent hope.
Let's take action now to lessen the impact on our global environment.



Related SDGs

Revised February 25, 2025

copyright © JTB Corp. all rights reserved.

(Background Image AdobeStock)

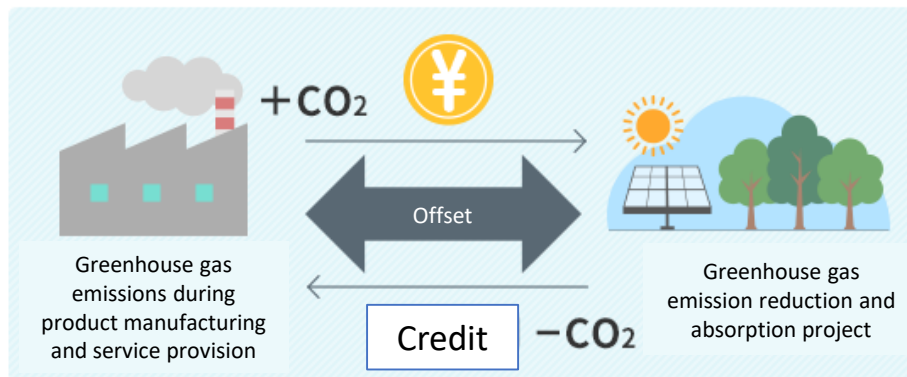


CO₂ Zero Travel is a travel program that utilizes the mechanism of carbon offsetting(*)).

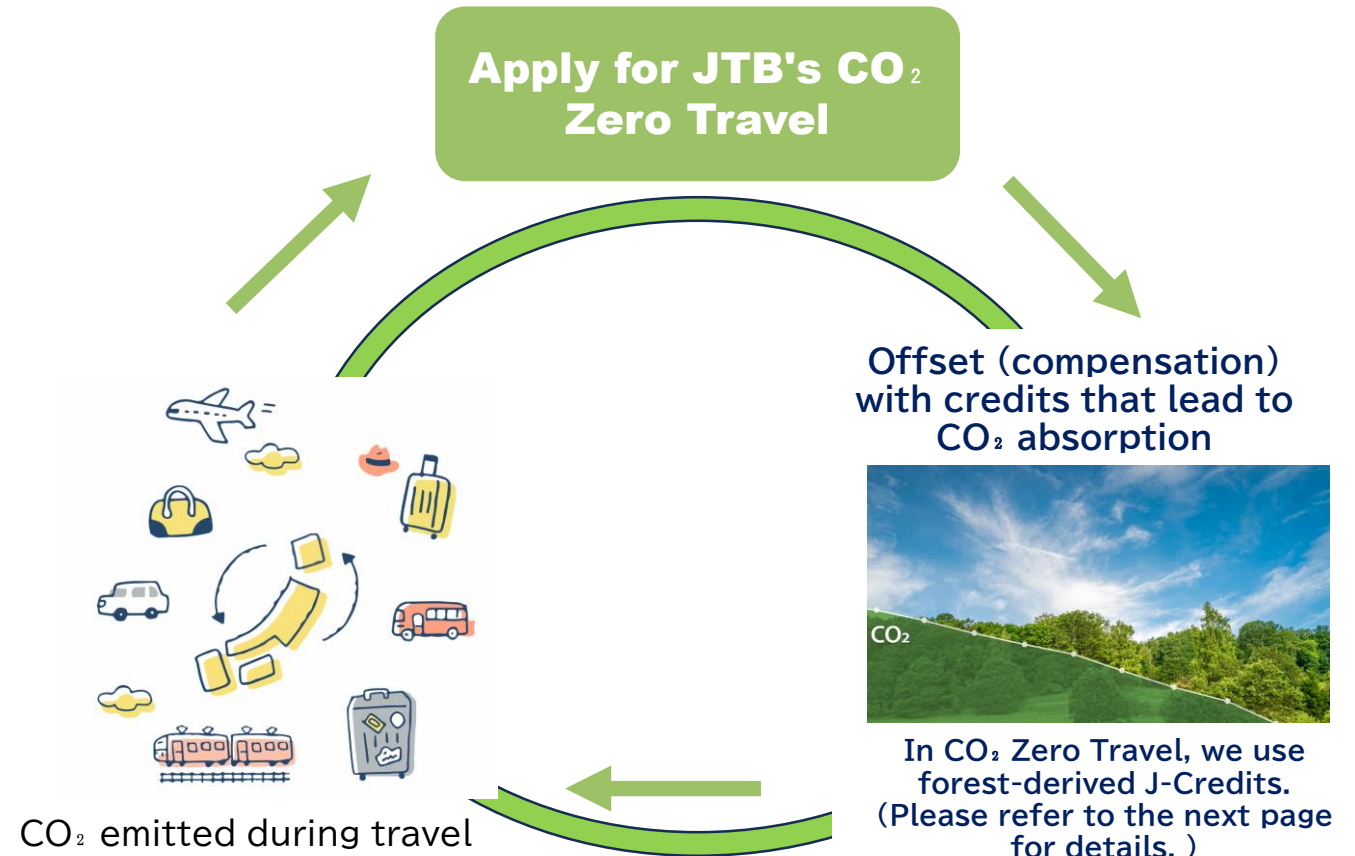
*Carbon offset refers to the concept of compensating for the emissions of greenhouse gases (CO₂, etc.)
that are unavoidable in daily life and economic activities (after all efforts to reduce emissions have been made as much as possible)
such as by investing in activities that reduce greenhouse gas emissions equivalent to the amount emitted.

Carbon Offset Mechanism

- ✓ Add a partial cost to travel expenses
- ✓ Purchase "J-Credits" with that cost
- ✓ Indirectly offset CO₂ emissions during travel



(Reference: Ministry of the Environment "Carbon Offset Guidelines")



What is J-Credit?

The J-Credit Scheme is a system in which the government certifies credits for projects such as CO₂ absorption through proper forest management, CO₂ emission reductions through the use of renewable energy, and the introduction of energy-saving equipment.

This system is operated by the government.



Benefits of Using the J-Credit Scheme

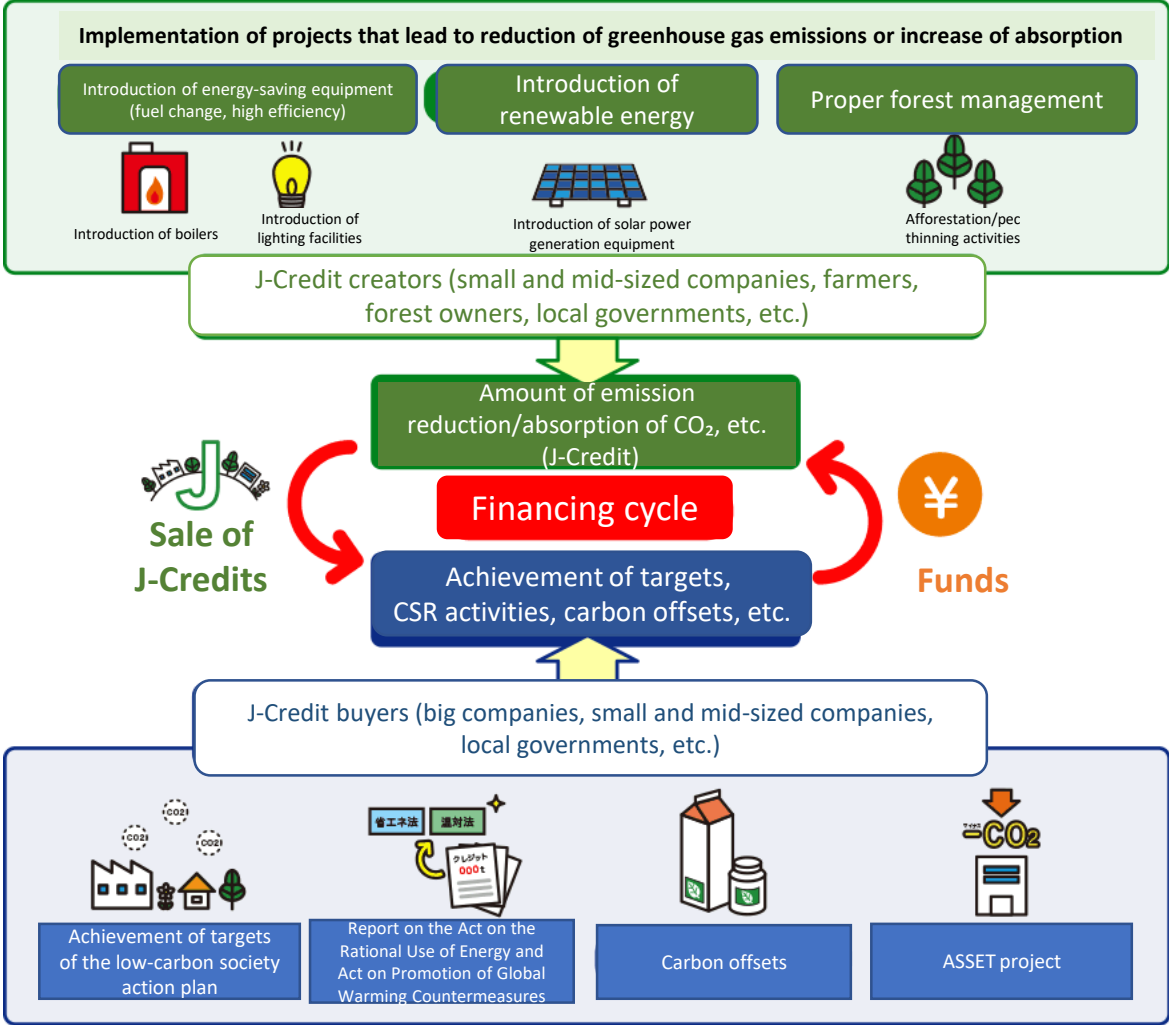
Initiatives for SDGs

Initiatives for ISO 14068-1

Initiatives for environmental consideration in CSR activities

Initiatives following the GHG Protocol

Initiatives for information disclosure based on the SHK system



***Please note that this does not comply with SBT and cannot be used for reporting.**
(In SBT, J-Credits derived from renewable energy (electricity and heat) can be reported as renewable energy procurement amount, but credits from CO₂ Zero Travel® cannot be used for reporting.)

About the Source of J-Credits

While the J-Credit Scheme offers various credits that contribute to CO₂ removal and reduction, JTB's CO₂ Zero Travel utilizes forest-derived J-Credits (see below).

What are forest-derived credits?

Forest-derived credits are those certified by the government as credits for the amount of CO₂ absorbed through proper forest management, such as periodic thinning.

As continuous proper management (operations) of forests involves economic burdens, purchasing the credits generated through operations can lead to further operations.

In other words...

When companies promote CSR activities, they can convey that they are "supporting initiatives such as for forest conservation" instead of emitting greenhouse gases through travel.

In the ISO standard 14068-1, the pathway to carbon neutrality is divided into two phases, Early and Later.

While any type of credit can be used in the Early phase, only removal type (forest-derived, etc.) can be used in the Later phase.

Reduction credits
(renewable energy-
derived, etc.)

Removal credits
(forest-derived,
etc.)

~~Reduction credits~~
~~(renewable energy-
derived, etc.)~~

Removal credits
(forest-derived,
etc.)

Early phase

Although emissions reduction and removal are being implemented according to the plan, there are still emissions that have not been reduced, and we are at the stage of offsetting those emissions using credits (regardless of type).

Later phase

Only the emissions that cannot be reduced by emission reduction and removal remain, and this is the stage where those emissions are offset using removal credits (including cases where it is achieved solely through self-effort without offsetting).

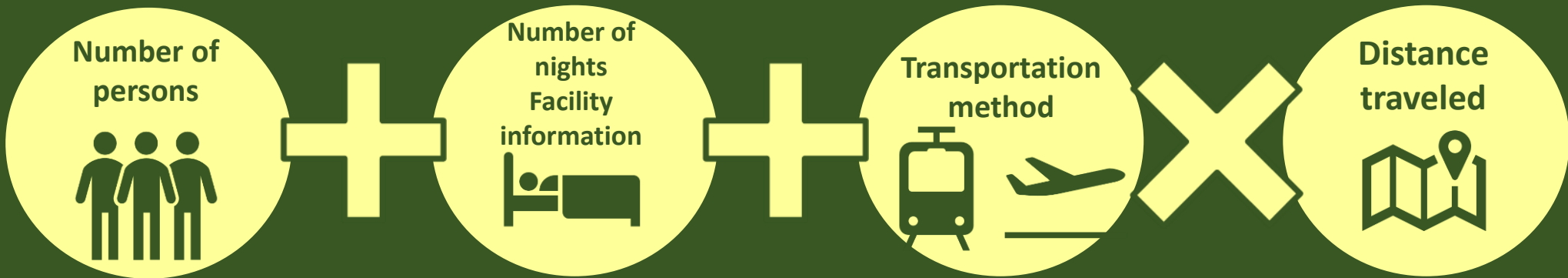
Required Information for CO₂ Zero Travel

'CO₂ Zero Travel' is the English name for 'CO₂ ゼロ旅行', and 'CO₂ ゼロ旅行' is a registered trademark of JTB Corp in Japan.



Information Required for Application

This is all the information needed!



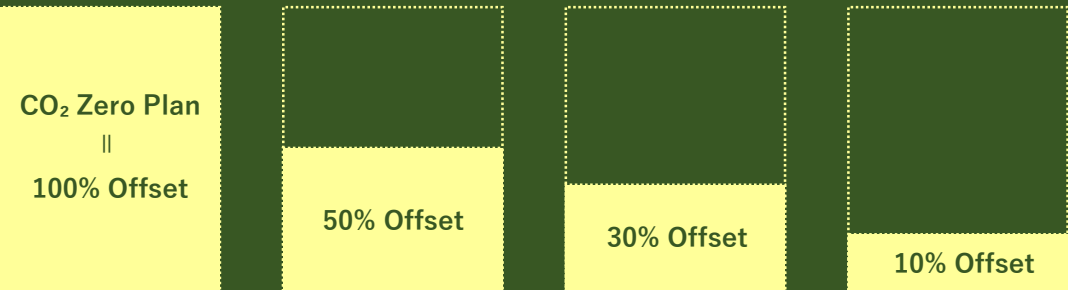
Calculation Method for Accommodation Section

For the CO₂ generated from accommodation, only the 100% Offset Plan which offsets approx. 15kg of CO₂* per person per night is available.
(There are no 50%, 30%, and 10% plans.)

*Based on the Ministry of the Environment's Emission Intensity Database, calculated using the average number of people entering a room among JTB gross sales.

Calculation Method for Transportation Section

For the CO₂ generated from transportation, there are 4 plans to choose from based on the offset amount.





Documents that can be provided to customers

《J-Credit Retirement Notification》

*This is an official certificate proving that credits have been transferred to a retirement account.

SAMPLE

12410280012
2024年10月28日

コミュニケーションデザイン 殿
JP-100-20000-00001-00 -00)

J-クレジット制度管理者

無効化通知書

J-クレジット制度実施要綱 3. 2 に基づく無効化申請の結果として、下記のとおり、J-クレジット登録簿システムに処理したので、お知らせします。

記

トランザクション番号

JP-20000-00000-XXXX

口座種別

J-クレジット用 無効化口座

口座番号

JP-100-20000-00000-00 00-00

処理日

2024年10月25日

クレジット情報

項目	種別	クレジット認定番号 (: プロジェクト名)		数量 (t-CO ₂)	
		クレジット特定番号			
1	PM	省エネルギー量 (kJ : 原油換算)	再エネ算定量 (電力 : MWh)	再エネ算定量 (熱 : GJ)	非化石エネルギー量 (電力 : kWh)
		1025301 : 九州電力社有林 CO2吸収プロジェクト			
		JCL-400-000-008-372-XXX ~ JCL-400-000-008-372-XXX			
合計					1

以上

＜用途＞

その他

＜クレジット利用法人・実績報告年度・利用期間＞

MM大学 ●●研究室 研修旅行

今年度実績の報告

2024/9/23 ~ 9/28

＜目的詳細＞

2024/9/23 ~ 9/27 熱海XXホテル ご宿泊

2024/9/23 ~ 9/28 熱海XXホテル ご宿泊

《CO₂ Zero Travel Certificate》

*This is an optional certificate issued by JTB. There is no official effect.

SAMPLE

GREENSHOES

CO₂ Zero Travel

No.

The CO₂ emissions from transportation and accommodation in this tour will be offset using the "J-Credit Scheme", which is operated by Japan's government.

Estimated CO₂ emissions offset in this tour

0.0 kg-CO₂

Travel period

3/1/2025 ~ 3/4/2025

Place of issuance of this certificate

JTB Global Marketing & Travel Inc.

"CO₂ Zero Travel" is the English name for "CO₂ ゼロ旅行", and "CO₂ ゼロ旅行" is a registered trademark of JTB Corp in Japan.

Purchase Offset Amount (kg-CO ₂) (Purchase Price)	Before Tour or Day of Tour 1 per person or 1 per group	After Tour
999 kg-CO ₂ and below	CO ₂ Zero Travel Certificate (Optional)	— (*1)
1,000 kg-CO ₂ and above (= JPY 13,100 yen (tax incl.) or more)	CO ₂ Zero Travel Certificate (Optional)	J-Credit Retirement Notification

(*1) For those who would like to receive the J-Credit Retirement Notification for 999 kg-CO₂ and below, the purchase amount will be increased to 1,000 kg-CO₂ (JPY 13,100 yen (tax incl.))*2).

(*2) Includes a fee of JPY 1,100 (tax incl.) for issuing the J-Credit Retirement Notification.

《J-Credit Retirement Notification》

*An official certificate proving that the purchased credits have been transferred to a retirement account.

SAMPLE

株式会社JTBコミュニケーションデザイン 殿
〒100-0000 東京都千代田区〇〇 〇〇 〇〇
12410280012
2024年10月28日

J-クレジット制度管理者

無効化通知書

J-クレジット制度実施要綱3. 2に基づく無効化申請の結果として、下記の通り、J-クレジット登録簿システムに処理したので、お知らせします。

記

トランザクション番号 JP-20000-00000-XXX
口座種別 J-クレジット用 無効化口座
口座番号 JP-100-20000-00000-00 00-00
処理日 2024年10月25日

クレジット情報

項番	種別	クレジット認定番号 (：プロジェクト名)		数量 (t-CO ₂)	
		クレジット特定番号			
1	FM	1025301:九州電力社有林 CO2吸収プロジェクト			
		JCL-400-000-008-372-XXX~ JCL-400-000-008-372-XXX			
合計					

以上

<用途>
その他

<クレジット利用法人・実績報告年度・利用期間>
MM大学 ●●研究室 研修旅行
今年度実績の報告
2024/9/23~9/28

<目的詳細>
2024/9/23~9/27 熱海XXホテル 二泊
2024/9/23~9/28 熱海XXホテル 二泊

What does "retirement" mean?

- Retirement of credits refers to the completion of the transfer from the owner of the offset credits to the retirement account of the purchaser. As a result, it will be possible to prove that the indicated CO₂ amount has been reduced without the relevant credits being used twice.

How to Use the J-Credit Retirement Notification

- Enhance corporate brand value and gain new fans as a company committed to reducing CO₂ through posting the J-Credit Retirement Notification on the home page and other platforms
- ESG measure = improve finance evaluation
- Proactive efforts towards SDGs such as promoting appeal within the company, promoting behavior change among employees, etc.

Account Holder Name

*The name "JTB Communication Design, Inc." will be included in the retirement procedure.

Purchased Forest-derived Project Name

*Example: Forest Management Activities in Town-owned Forests in ●● Town

Offset Amount (ton-CO₂)

*The CO₂ offset amount will be expressed in tons.

Usage

*Usage: In CO₂ Zero Travel, it will be indicated as "Other."

Credit usage corporation,
performance report year, usage period

*The name of the customer who made the purchase, the reporting year, and the travel period will be indicated.

Purpose Details

*The accommodation facility name, etc. will be indicated.